



Secure Image Pro

Version 4.0 updated December 2005

Image Encryption for Windows, Mac and Linux

To learn how Secure Image works, follow the [step by step tutorial](#), then check out the output in your web browser. When familiar with how security applets work you will be better equipped for customization.

- [Installation](#)
- [Tutorial](#)
- [What's new in 4.0](#)
- [Security and protection](#)
- [Demo limitations](#)
- [Register your program](#)
- [Troubleshooting](#)

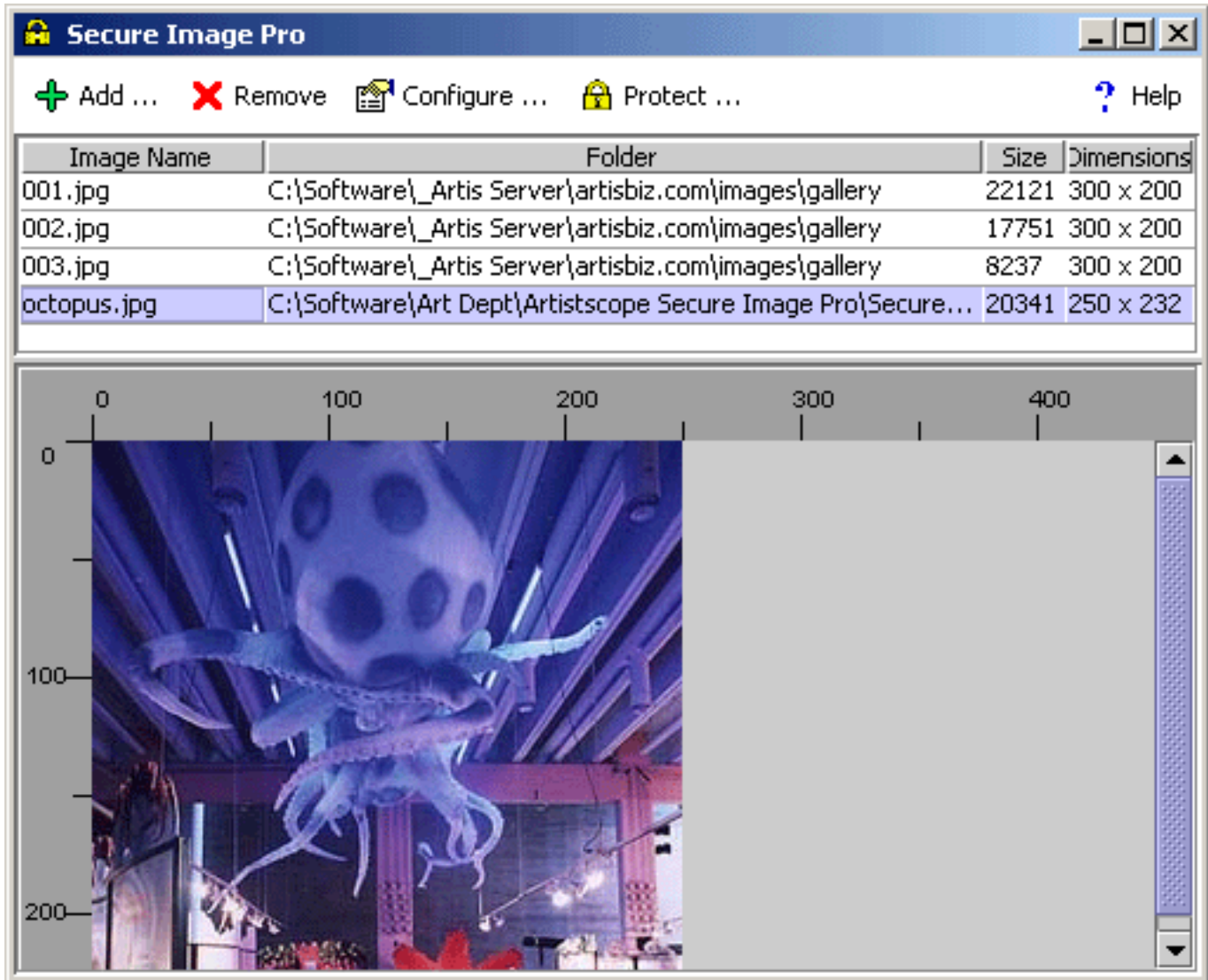
Features:

- [Domain Lock](#) encryption
- [Security](#) from common methods of saving
- [Slideshow](#) swap image or text (print protection), etc (Pro version)
- [Color select](#) with adjustable border frame and
- [Optional encryption](#) for domain lock, CD or none
- [Multi-user registry](#) for several domains
- [Batch file import](#) and saving of 1,000's of images at a time
- [Supported](#) in all web browsers on Windows, Mac or Linux

Tutorial

Getting started

Secure Image is very simple to use. However, for your first test it is recommended to keep it as simple as possible until assured that it works for you. Images created by the **free trial** version will expire in 48 hours. Images produced by the **registered** version will [Domain Lock](#) after 48 hours and can only be viewed from the licensed web site.



This tutorial will take you through a simple exercise of preparing an image and then you will be able to double-click the new page to see it in your browser.

1. Select an image

Click on the **Add** button to open a directory for selecting images to encrypt. Any JPG or GIF can be

used, however for the tutorial so that you get it right first time, use the images in **library** folder within the program's folder.

2. Configure settings

Highlight a single or several images and then click the **Configure** button. The configuration wizard will open.

3. Presentation style

Select a display option and then click **Next**. Try the startis hyperlink option.

4. Image appearance

Here the colors can be set for the applet's background (includes border color) and the text displayed.

5. Encryption

Pro encrypts the image and includes your code to lock the image so that it can only be viewed from your site and from within the ArtistScope applet. With the registered version you have the option of Domain Lock, All Sites and using no encryption at all. For your trial, select All Sites to be able to view the result both locally and online for a limited time. When registered it is strongly recommended to only use Domain Lock (unless you have more than one site that you want to use with the same images).

6. Image messages

Here you can set the text message to be displayed as the image loads and also in the status bar of web browsers.

7. Presentation style settings

Here you need to set extra parameters depending on the display style that you selected. The hyperlink on the target frame applet cannot be edited in the demo version.

8. Completing the wizard

Click **Finish**.

9. Saving your new work

After using the Configuration wizard, you can process selected images and save the new files by

clicking the **Protect** button. You will be prompted for a location to save the new files. Select a folder and then click Open... your project will be saved.

10. View the image

Locate the the new image page on your computer and double-click the **html** file to open it in your web browser.

11. Upload to your web site

To view the new files from your server you must upload ALL of the new files.

12. Editing

The program creates the viewing applet for the image and adds it to a web page. The new page can be used as a template to copy the image applet from for pasting onto existing pages with prepared copy. Or it can be used as the start page to build upon by adding extra images and text, etc.



To move an image from one page to another, in design or html view in your editor, select the image or code that represents the APPLET code. Then paste it to your real page. It is not the image that is used nor its link. The applet viewer decodes the image and displays it if the site is legal.

13. Working with multiple security applets on the same page

However when using Secure Image Pro, attention needs to be paid to the image loading applet at the bottom of the page, especially when there is more than one image per page. For example, when creating a page with several security applets, the loading sequence is controlled by the loading applet. If you add or remove an image without modifying the loading applet, the images will not load properly.

Installation

Windows:

- You may need to install a Java 1.5 (or later) virtual machine. You can download from [Sun's Java site](#)
- After downloading, unzip and double-click **SIPro4demo.exe** to run the installer.

Mac OS X:

- Requires Mac OS X 10.0 or later and Java 1.5 or later
- After downloading, double-click **SIPro4demo.dmg**
- The Secure Image Pro folder will be extracted to your desktop
- To start the program double-click SecureImagePro.jar

Linux - Unix - Solaris - HP-UX - AIX

After downloading open a shell and, **cd** to the directory where you downloaded the installer.

- At the prompt type: **sh ./SIPro4demo_*.bin**
- Requires JRE 1.4 or later. You can download the JRE from [Sun's Java site](#) or contact your OS manufacturer.
- Linux requires X Windows and Redhat 9 or later (otherwise GLIBC needs to be updated). Recommended location for JRE install is **/usr/local**. You can install anywhere if you create a symlink for the java PATH...
- **cd** to **/usr/local**
- then **ln -s /usr/local/java/j2re1.4.2_05/bin/java java**
- Recommended location for SIPro install is to **/home**
- After downloading open a shell and CD to the directory where you downloaded the installer.
- At the prompt type: **sh ./SIPro4demo_*.bin**

All Other Platforms:

Instructions (Unix or Unix-like operating systems)

- After downloading, type **java -jar SIPro4demo_all.jar**
- Or type **jre -cp SIPro4demo_all.jar install**

- If that does not work, try `java -classpath [path to]classes.zip: SIPro4demo_all.jar install`
- If that does not work either, on sh-like shells, try

```
cd [to directory where SIPro4demo_all.jar is located]
CLASSPATH=SIPro4demo_all.jar
export CLASSPATH
java install
```
- Or for csh-like shells, try

```
cd [to directory where SIPro4demo_all.jar is located]
setenv CLASSPATH SIPro4demo_all.jar
java install
```

Instructions (for other platforms)

- Be sure you have Java 1.1.6 or later installed. You can download Java from [Sun's site](#)
- In a console window, change to the directory where you downloaded `SIPro4demo_all.jar` to before running the installer
- Your operating system may invoke Java in a different way. To start the installer, add `SIPro4demo_all.jar` to your `CLASSPATH` then start the main class of the installer named `install`

New features

Secure Image Express

Secure Image Express replaces all lower versions which are now no longer available. It is the same as Secure Image Pro except with fewer display effects and a simplified security applet. For demonstration purposes it is the same program.

The Secure Image Express security applet does not include the secondary loading applet (for multiple images) and recommended where only one protected image is displayed on the page.

Registered users of versions 2.1 and 3.0 can upgrade to Secure Image Express at the discounted "Extra Licence" price.

Secure Image Pro 4.0

Secure Image Pro has been rewritten for Java 1.5, enabling it to run on [all platforms](#) including Windows, Mac, Linux, etc, with many new features:

- Slideshow option displaying different images in sequence
- New configuration wizard
- Support for use on ArtisCD
- Show preview when selecting an image
- Show rulers in pixels
- Resizable work area to suit your screen size

Secure Image Pro 3.0

Secure Image Pro 3.0 was a special rewrite of earlier versions that compensated for Java deficiencies on Mac computers. By using earlier Java sources to create a special image loader function, Secure Image was made viewable in all web browsers.

- Swap image and text messages on MouseOver
- Load multiple security applets on the same page
- Batch import by folder

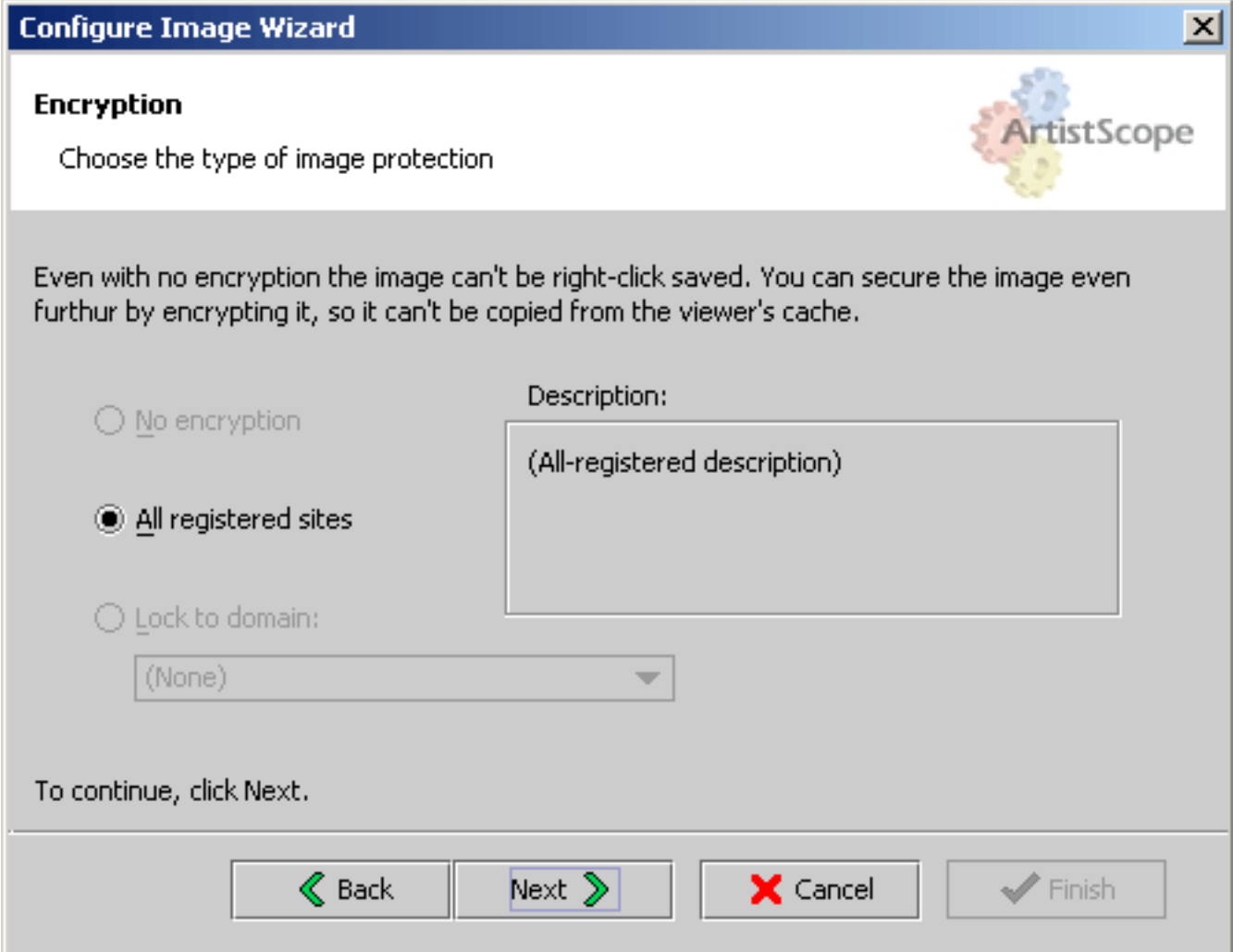
Secure Image 2.0

Secure Image 2.0 was a rewrite to compensate for changes in Java sources and optimised as a Windows program.

Security

Domain Lock

With [Domain Lock](#), your images and applets can only be used on your web site. Pirates cannot use them on any other site.



The screenshot shows a dialog box titled "Configure Image Wizard" with a close button (X) in the top right corner. The main heading is "Encryption" and the instruction is "Choose the type of image protection". In the top right corner of the dialog, there is a logo for "ArtistScope" consisting of four interlocking gears in blue, red, yellow, and green. Below the heading, there is a text box explaining: "Even with no encryption the image can't be right-click saved. You can secure the image even further by encrypting it, so it can't be copied from the viewer's cache." There are three radio button options: "No encryption", "All registered sites" (which is selected), and "Lock to domain:". Below the "Lock to domain:" option is a dropdown menu currently showing "(None)". To the right of these options is a text area labeled "Description:" containing the text "(All-registered description)". At the bottom left, it says "To continue, click Next." At the bottom of the dialog, there are four buttons: "Back" with a left-pointing arrow, "Next" with a right-pointing arrow (highlighted with a blue border), "Cancel" with a red X, and "Finish" with a checkmark.

Protection from right MouseClick

Protection from "right MouseClick" and MSOFT Explorer page saving. Mouse clicking offers several options for saving or copying the page or image. Secure Image prevents right mouse click operations in several ways, depending on which applet style is used. If it is the Standard display the visitor will be transported to a set page or the next link. If no link is on the image - no difference because the mouse cannot activate a menu from the applet.

Protection from bandwidth theft and unauthorized linking

It is impossible to directly link to your encrypted images and display them on another web site.

Images are safe from spiders and site grabbers

Spiders, grab applications and programs such as Pdf, Xenu, Site Copy and Teleport Pro that search a site and provide a report of all the linked content cannot locate the protected image folder nor the Java and data files associated with the images because they are encrypted and domain locked. They are also safe from search spiders such as Google image search.

Cached images are not retrievable

Cached images in the Temporary Internet Folder are not retrievable. These images are generally difficult to retrieve but because the image files are encrypted they can never be retrieved.

Images stored on the server are secure

Secure Image Pro images are encrypted and domain locked to your web site. The key code is based on the address of your website so that images can be encrypted for your site only. This means that even if someone gets all your files then the images will not be viewable anywhere else (even locally) except on your web site. Images stored on the server are secure from everyone including your webmaster.

Protection from all saving

Secure Image Pro will protect your images from all avenues of downloading and saving including Printscreen. For protection from screen capture programs we recommend the use of [Copysafe Web](#).

Demo Limitations

The demo program will not expire. All functions are possible with the following limitations:

- Images created by the demo will expire in 48 hours, after which they will not display.
- The hyperlink on the image and the status bar messages cannot be changed but in the demo. These options are fully editable in the registered version.

Java

Check that Java is enabled in your browser settings.

Java VM

The Microsoft java module was flawed and has been discontinued. If your browser has not been updated, install the latest module from java.com

[See install instructions](#)

Registering sites

To use Secure Image beyond trials you need a [keycode](#) for your web site. Your web site key enables [Domain Lock](#) so that the images will be decrypted and displayed. Your first license includes domain lock for a nominated web site plus use on CD (as with ArtisCD). Extra sites can be added to the program with discount.

Express vs Pro versions

Secure Image Express does not include slideshow and swap image and message features, and is better suited for displaying a single protected image on a web page. Users creating pages on the fly from a database are recommended to use the Express version for its simplicity. Secure Image Pro includes many extra display effects plus support for displaying multiple images on the same page (usually not supported in non-Windows browsers)

Licence types

Your site key is based on the url and not just the domain name. For example:

- [www.mySite.com](#) - includes [mySite.com](#) but not [gallery.mySite.com](#)
- [gallery.mySite.com](#) - for [gallery.mySite.com](#) only
- [gallery.mySite.com/artistname/](#) - for images within the [artistname](#) folder

Multiple licenses

With every site registered you also get a keycode for use at "localhost" for testing on personal web servers and on [ArtisCD](#). When you have several sites registered, you have the option of applying [domain lock](#) for selected sites. When ordering extra domain licenses, be sure to nominate all your other licenses for them to be included in the same program.

Register online

You can register or add licenses to your program using our [secure gateway](#).

Delivery

When your order is confirmed you are notified by email with a download link to your software (custom compiled to include your keycodes).

Support

Program documentation

- [Cache errors](#)
- [Common Errors](#)
- [Image Errors](#)
- [Java](#)
- [Terminology](#)

Platform support

Secure Image Pro supports JPG, GIF and most animated GIF images. Secure Image Pro images can be viewed with any web browser and displayed from any web site on any type of web server. The program itself is available for use on Windows and Mac computers

Online support

Please visit support.artistscope.com for common questions asked by other users. The forum is searchable by topic and keyword.

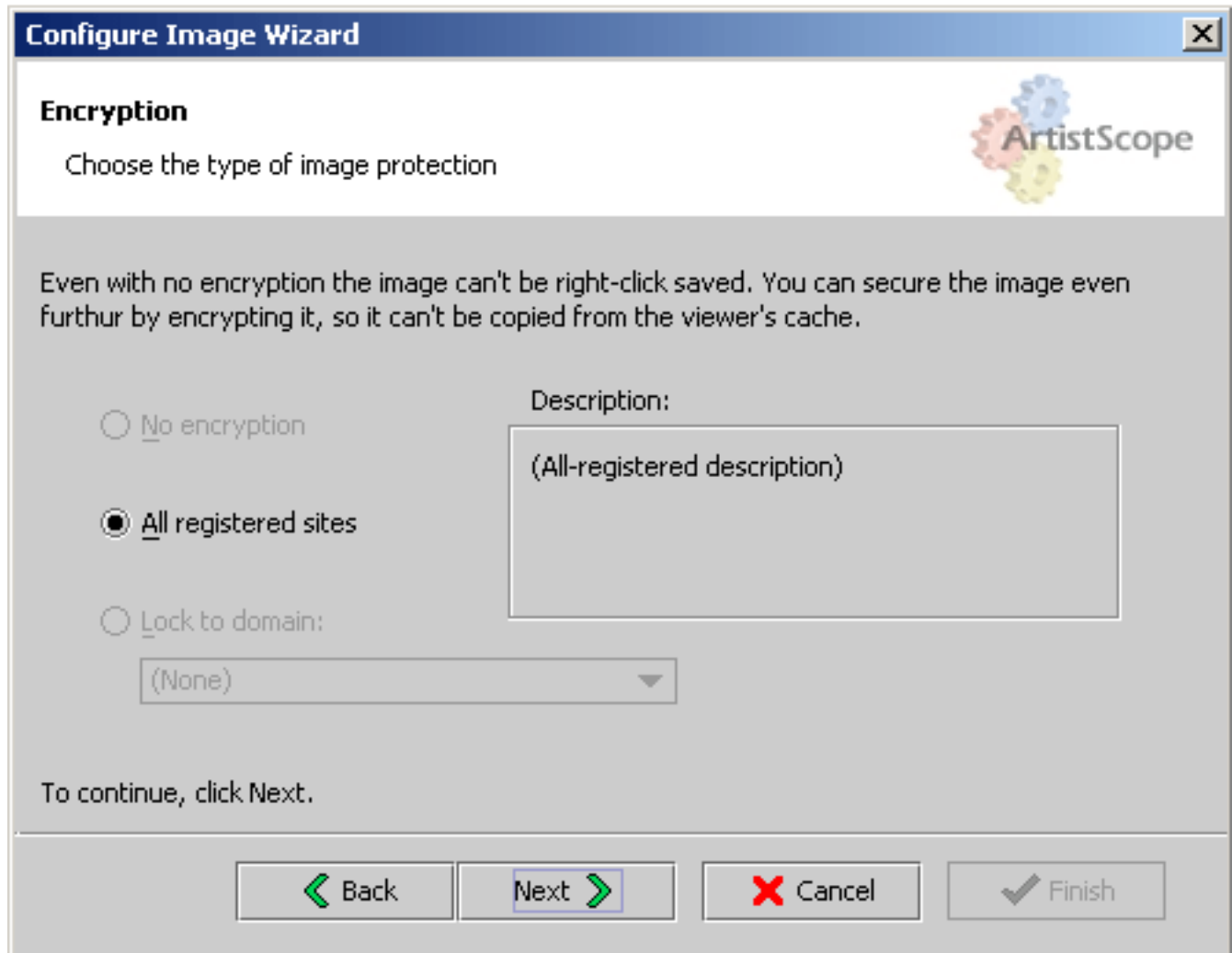
Email support

Unlimited support is available by email to all registered users until the application is understood and fully functioning on your web site. First see if your query isn't already covered in our Online Support Forum. If you still need help please use the contact form on our web site at www.artistscope.com

When seeking support, please provide a link to your web site where you have uploaded your test pages. Do not send the files as we need to see your example online.

Domain Lock

Domain Lock is a feature developed by ArtistScope to prevent your encrypted images and applets being used unlawfully (on unauthorised sites).



Encryption options

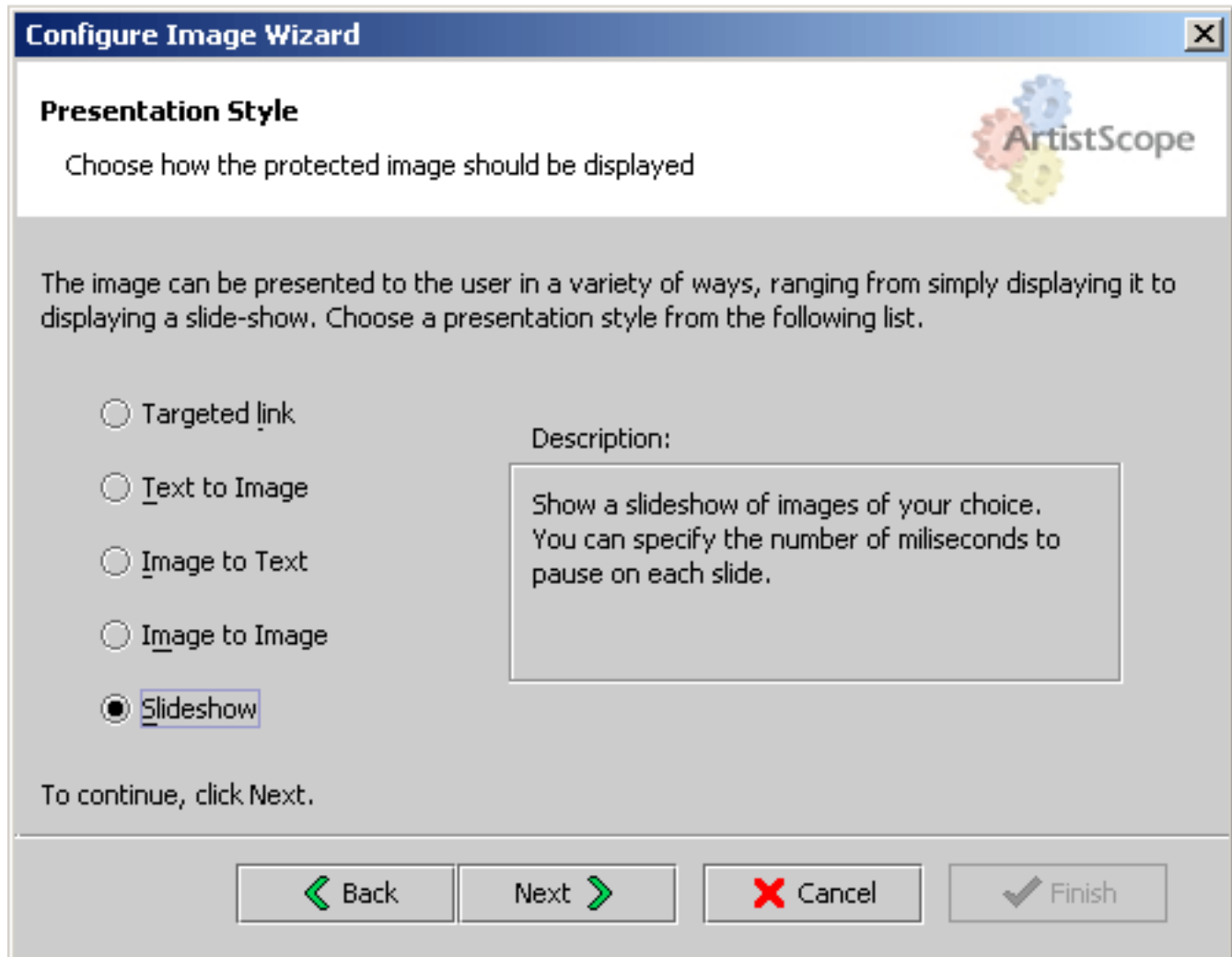
- **Domain Lock** - where only one web site is nominated.
- **All Sites** - where several sites are registered and used in the one program, the same image can be used for all of the listed sites.
- **None** - no image encryption is used.

Multiple registry

Secure Image Pro can be used for one or many sites. When saving your new work, you have the option of selcting encryption for one or more of the sites registered in the program. Selecting for all will encrypt the same images for use on all selected sites.

Applet Effects

You have several different options for how the images are displayed. Any number of images or different styles can be displayed on the same page.



- **Slideshow** displays [several images](#) in perpetual rotation.
- **Swap image to text** initially loads with your text message displayed which changes to show the image when the mouse is moved over the applet.
- **Swap text to image** initially loads with your image displayed which changes to show your text message when the mouse is moved over the applet.
- **Swap two images** initially shows the first image and swaps to the second image when the mouse is moved over the applet.
- **Image hyperlink** will link to the next page using a targeted frame (or none).

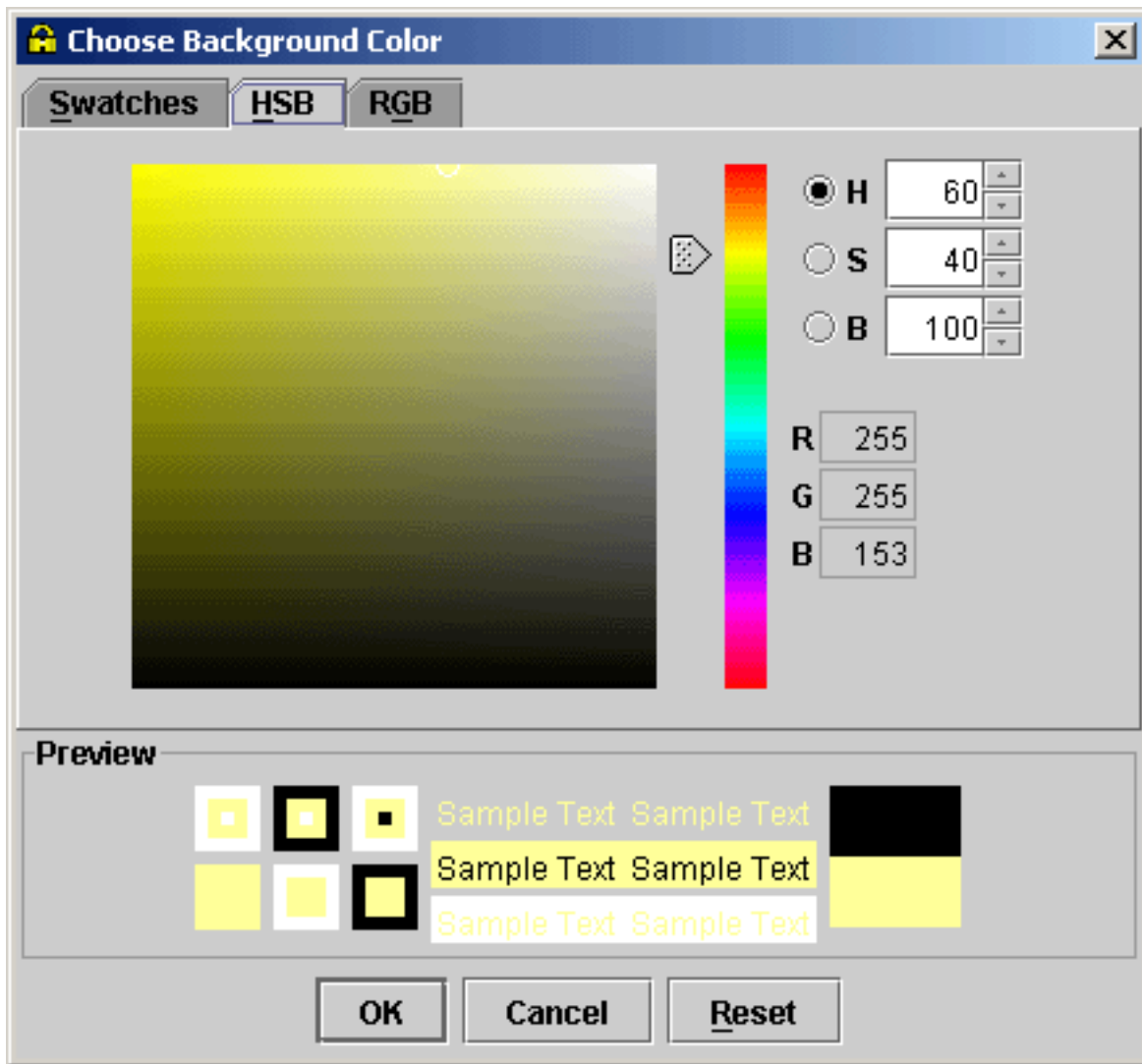
These features are available in the Pro version only. Secure Image Express does not include swap image and slideshow effects.

Color settings

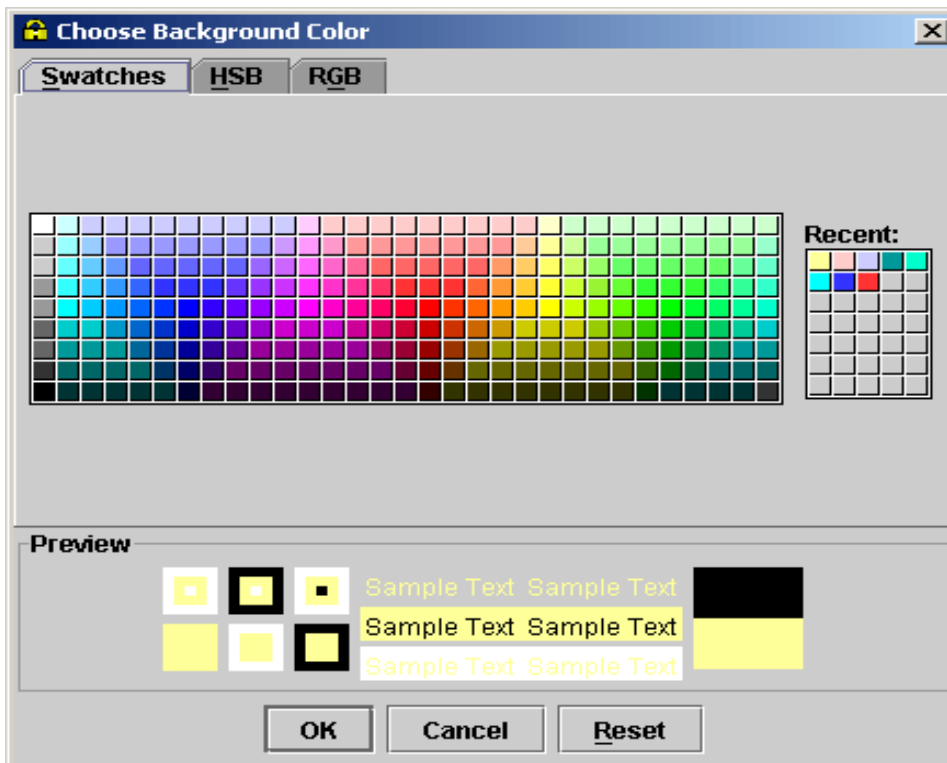
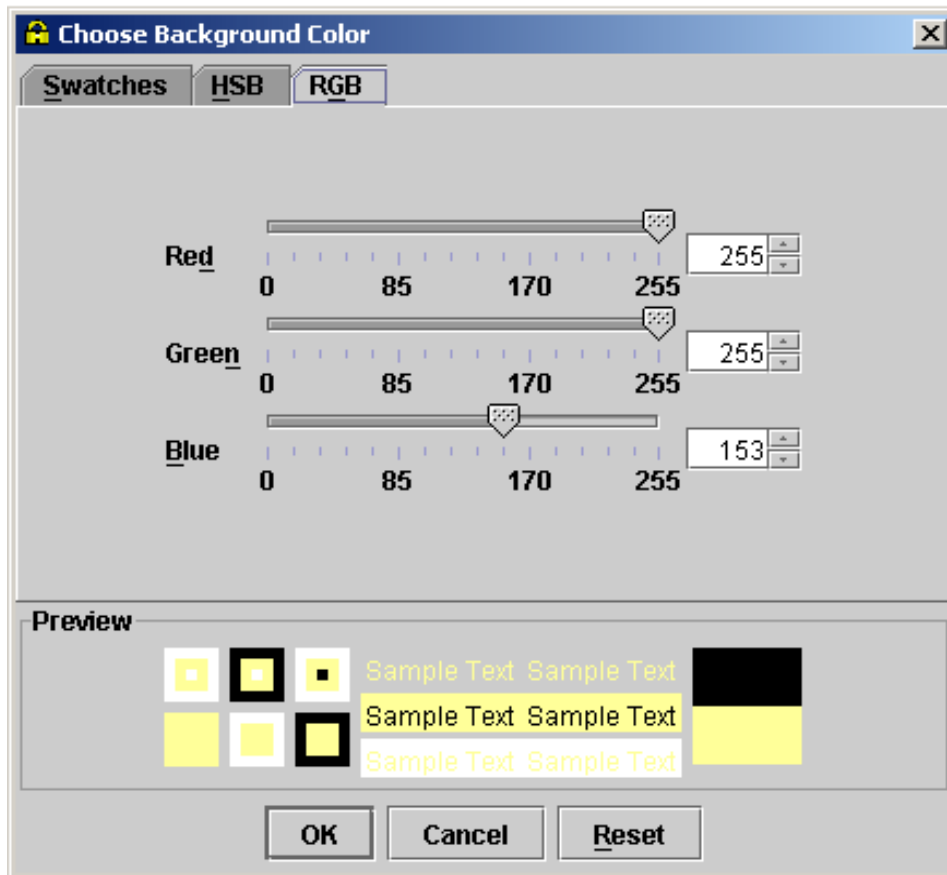
Selecting colors

Here the colors can be set for the applet's background (includes border color) and the text displayed.

There are 3 different options for selecting color, depending on what format you are matching.



A preview of which colours have been selected is show at the bottom of each tool window.



Batch Import of Images

Multiple selection

File import supports multiple selections - use Control and Shift click to select multiple images in a folder.

Folder import

Select a folder to import and Pro will import all JPG and GIF files in the folder. It also includes any folders within the selected folder.

Batch Saving

Saving batches of images

When loaded into the Pro workplace you have the option of selecting some or all listed images to encrypt on command. Then you select whether to save each image to individual pages, or save all images to a gallery page.

Although each image may have different settings, their individual settings are maintained regardless of how large the batch.

Individual pages

Each new page created will be named as the image name that was imported. For example image001.jpg will produce image001.class (the encrypted image) and image001.html.

Gallery page

When saving all images to a single page, it will be named gallery.html. When using this option, care taken in preselecting images to display together on a page will avoid problems with editing later. Please note the properties of the [image loading sequence](#).

Limitations

How many images that can be processed at one time depends on the image file sizes and the available memory on your computer. We have received reports of batch saving more than 3,000 images at a time.

Application

Email, download and CD

Secure Image can also be used on CD by compiling your content using [ArtistScope CD](#). ArtisCD produces an encrypted tarball of your content which cannot be extracted. The end product is delivered as an EXE file that can be distributed by email, download or on CD. When run locally on the viewer's computer, your pages and images are delivered web style, just as from your own web site.

Static web pages

By modifying the template file in the viewer folder, you can add your standard headers and footers (or inserts). Then your new pages can be matched to your existing site theme.

Pages on the fly

Secure Image content can be delivered on the fly using templates, loading the parameters from a database (or the image only). Secure Image Express is recommended for single protected image display when using templates. Further notes on this topic can be found in our [online support forum](#).

Platform support

Secure Image 4.0 is pure Java enabling it to run independent of platform. Different [installers](#) are available for each platform from the ArtistScope download site. Secure Image Pro images can be viewed in all web browsers.

API

For command line reference, please contact ArtistScope support.

Copysafe PDF

CopySafe PDF is the most secure solution for distributing copy protected PDF files. It is the only solution available in the world that can protect PDF from all avenues of copy. The CopySafe PDF Converter will import existing PDF documents, include the CopySafe runtime and either produce an embedded viewer and/or a smaller PDF library file that can be read in the Copysafe PDF Reader... ideal for distribution by download, email or on CD for Windows whether online or offline.

- The encrypted PDF cannot be extracted
- Protect from saving
- Protect from Printscreen
- Protect from all screen capture software
- Optional password protection
- Optional print protection
- Optional expiration date

When importing PDFs created by Adobe Acrobat that already have set password, expiry or watermark, those options are maintained in the Copysafe encrypted version. CopySafe PDF Reader The Copysafe PDF Reader is available as a free download to the public, anyone that needs to view Copysafe protected PDFs. Copysafe PDF Converter Copysafe PDF Converter is a licensed program that imports existing PDF files, encrypts them into library files that can be opened with the free Copysafe PDF Viewer.

Copysafe Web

Copy protection wfor online web content

Copysafe is safe from all avenues of saving!. It does not depend on complex server side configurations and is simple to use. It is the most portable solution possible and will run from any web page or folder on the web.

Copysafe Web uses image encryption as with Secure Image, plus the Copysafe plugin to restrict the use of printing and saving controls, Printscreen and screen capture programs.

When the visitor visits a Copysafe Web page, if they do not already have the Copysafe plugin installed, they are directed through download and install, and then back to your page for continued browsing.

They are then free to browse, but are not able to copy the images in any way.

Variable protection options

- Allow/prevent capture programs on individual pages.
- Allow/prevent printing on individual pages.
- Allow/prevent keystrokes and menus on individual pages.
- Added support for Windows Mozilla browsers.
- Added support for intranets and ArtistScope CD.

Copysafe Web plugin

Once installed to the default browser, the visitor can then refresh the protected page to continue browsing. ArtistScope maintain the download service, plugin distribution, call authorizations and free support by email. All you need to do is upload your content to the nominated web site.

The plugin is available freely on the Internet to anyone visiting a Copysafe page. Plugins are provided from ArtistScope servers, or you can provide the downloads from your own web site.

CD Distribution

Copysafe web style content can be distributed on CD by using [ArtistScope CD](#). or you can use Copysafe PDF.

[Visit online demo](#)

ArtistScope CD

ArtisCD will support most content normally viewed from your web site. Delivered as an encrypted archive, individual content cannot be easily extracted. ArtisCD runs from an exe file (from the user's hard drive or CD) as a mini web at 'localhost' enabling content to be delivered web style on any Windows PC.

Almost any type of content can be encrypted including html, txt, docs, xml, images, Pdf, etc. Features:

- Encrypted archive functional to 600 Mb
- Supported in all Windows browsers
- View web style content while offline
- Password protect option
- Set expiration date/time option
- Can run from an exe file executable from autorun
- Supports Copysafe and all other image protection systems

ArtisCD is extremely simple to use and just a matter of selecting the folder containing your content, nominating a password (if required) and nominating an expiry date (if time limit is required). Then you copy the new archive to your CDs... or you send it out to clients by email or web site download. To publish an entire web site, all you have to do is create a new folder containing your site content, and then modify your links to use 'index.html' as your home page.

Protect your source code

Ideal for web developers and software authors, ArtisCD can present your product without giving away the source code. As an author of a system such as a shopping cart or similar that is comprised of Asp scripts, providing demos prior to purchase can be futile as the client no longer has the incentive to pay for it.

Adding copy protection of individual content

Specially designed for use in conjunction with [Secure Image](#) or [Copysafe](#), ArtisCD provides the perfect platform for scripting and all other copy protection/image systems.

ArtistScope CD demo:

A trial demo of ArtisCD can be [downloaded](#) which will allow you to test compile your archives and explore the usefulness of this program.

Caching errors

When using any new program for the first time it is easy to make errors, and those errors can still be delivered even though they have since been corrected.

Cache problems for artists and designers

A common problem found when updating web content can be due to caching by either your browser or your ISP. Caching is performed by your web browser to conserve downloads by storing a copy in a temporary Internet folder or "cache". caching is also performed by most ISPs to conserve their data costs. Pages downloaded by their dialup users are stored by proxy servers or in caching engines so that they can be delivered internally (from within their own network) and thus save the data cost. Some hungry ISPs will enforce caching for days.

Artists and designers need to be aware of this phenomenon because editing a web site can be frustrating if one cannot see the updated pages, but instead see the old pages.

Caching

Still getting the same error even though you have made corrections?

On refresh you may be getting the latest page in your browser, but not the latest image.class file. This can be due to caching of previous errors by either your browser or your ISP. You can alter your browser settings for refresh, but some proxy connections may not update for days.

When reloading the page, try holding down the "Shift" key at the same time. If this fails then to avoid cached errors you will need to use a different image file name. Renaming the image.class file and modifying the applet's image parameter will save encrypting a new image.

Troubleshooting

Hyperlinks on the image

The [applet link](#) is editable in the registered version but not in the demo. If a link is not required leave the field completely blank (works when viewed from the registered site).

Status message in task bar

For this feature to function the image applet must be displayed from the registered web site.

Expiration

Images created by the demo version will be viewable for 48 hours only. Images created by the registered version never expire, however they are viewable on unregistered sites and locally for a period of 48 hours (to allow final edit/testing prior to upload). After 48 hours images created by the registered version will be [domain locked](#) and only viewable from your web site (or on ArtisCD).

Intranet use

The registered version is also provided with a license for "localhost" for Intranet sites such as personal web servers for pre publication review and testing.

Uploading

Never upload images or class files as ASCII. They must always be uploaded as Binary or they will be corrupted. Frontpage users do not have to worry about this as it is automatically selected. [Files to upload](#).

Altered links and parameters

Some html editors automatically adjust file links dragging pages from one folder to another. To avoid this, upload/save the new work directly to the intended folder.

Batch Saving

When [saving a batch](#) of images with the one command, the applets will maintain their individual settings and messages. However if using the **Image to image** option, omitting to nominate the second image will cause the conversion to fail on save.

Image Errors

48 hour window

Secure Image pages and images can be viewed locally and away from the registered site for a period of 48 hours to provide a window for local testing and editing prior to upload to your web site. After 48 hours they will only be viewable from the nominated/registered web site.

Image not visible

- Check that the [loading order](#) is correct and at the bottom of the page
- Check that the applet's [source paths](#) have not been altered

Multiple applets on same page

Each applet is given an ID and the bottom applet is the [image loader](#). The loading must be correct... if you have removed an applet from the page (or added an extra one) without correcting the loading applet, it will break the loading sequence and no images will be visible. For busy html pages (containing a lot of code and many other images) you need to ensure that the loading applet is last in your html (but still within your last Body/Html tags)

Uploading

Never [upload](#) images or class files as ASCII. They must always be uploaded as Binary or they will be corrupted. Frontpage users do not have to worry about this as it is automatically selected.

All the new files created, as found in the project "folder" must be uploaded for the system to work.

The files to upload are:

ArtistscopePro.class - Pro Java class file.

ArtistscopeViewer.class - Pro Java class file.

ImgLoader.class - Pro Java class file.

test.class - encrypted image

test2.class - 2nd encrypted image (with swap image)

test.html - web page with the ArtistScope applet

The original images are no longer needed. It is now the applet on the page that displays the new encrypted image.class file.

Altered links and parameters

Some html editors automatically adjust file links dragging pages from one folder to another. To avoid this, upload/save the new work directly to the intended folder.

Altering Codebase

The image.class files and the java class files must be in the same folder. The default set up is for the html pages and Java files to reside in the same folder as its web page. However it is possible to relocate the images and Java files by altering the path of the codebase (in the applet code). Instead of modifying the image parameter such as "images/image.class", a codebase statement will tell the applet to look for ALL class files in that folder. Further notes on this topic can be found in our [online support forum](#).

Batch Saving

When [converting a selection](#) of images with the one command, the applets will maintain their individual settings and messages. However if using the **Image to image** option, omitting to nominate the second image will cause the conversion to fail on save.

Domain Licensing

Check that the [site registered](#) does match the web site address that you have your Secure Image Pro images. Run your mouse over the internal links in your site and check that the same name appears in the hyperlink. If registered for "gallery.mySite.com" your images must be viewed at http://gallery.mySite.com.

Security

Some servers, when a call is made and the main index page is absent, will give the visitor a directory of all files within that folder. A precaution is having a generic filename your web server considers to be the default file. If your ISP requests that your home page be named index.html, index.htm, or default.htm -- then that's the filename being used. You should always have a default file in the project folder. This way, users who simply type in the name of the folder will be automatically directed to the default page, preventing them from seeing your file directory and thus exposing your secret folder.

Terminology

Applet	Html code added to web pages to call Java functions for the manipulation of data and images.
Class files	The applet's function files with the extension .class
Codebase	Applet's link to the source file folder. All image and class file should be in this folder.
Default settings	Default settings of the demo cannot be altered. However this is fully editable in the registered version, which will save the latest settings on exit, etc.
Domain Lock	Developed by ArtistScope, Domain Lock matches your images to your web site by using it as the encryption key. Images encrypted for one site cannot be used on other web sites (unless they are also registered and selected at the time of encryption).
Encrypted image	Images encrypted by Secure Image and renamed as image.class files. These images need to be displayed in a security applet and decrypted before they can be viewed.
Html	The code used to display a web page. The code governs what the web browser displays and is not visible on the page without using the browser's "view source" option.
Java	Program language supported in all platforms and web browsers.
Loading applet	Loader for multiple image applets in sequence
Normal image	Your original images. The ones to be encrypted.
Parameter	Nominated setting value in an applet
Site root	Lowest level of your web site... where your home is found.

Selecting images to encrypt

Start by clicking the **Add** button to locate images to import into the workplace.

When you highlight images you can then click the **Configure** button to start the configuration wizard. All the images highlighted can be encrypted on the one command by clicking the **Protect** button.

You can also use [batch import](#) to load many images at the same time.

Image Loader

Specially developed to prevent errors in Mac browsers, Secure Image Pro uses a loading sequence applet at the bottom of every page.

```
<APPLET code=ArtistscopePro.class width=1 height=1 name=ArtistscopePro id=Artistscope>  
<param name="ViewerCount" value="1">  
<param name="FrameCount000" value="1">  
<param name="000000" value="eye.class">  
</APPLET>
```

The loading applet must be the last item to load on the web page. It must be loaded after all other page items are loaded for it to function without interruption. If you are using page inserts or templates to build your pages on the fly, ensure that this applet is actually the last to load (last item before the Body and Html close tags).

Editing of multiple applets

If a page is created with more than applet on it, the applets will be given an ID number. If any of the image applets are removed, added or re-ordered on the page in any way, the loading applet parameters will need to be adjusted accordingly. It is recommended to have them load in the sequence as they appear on the page.

An incorrect load sequence may prevent images from appearing.

Image Hyperlink

```
<APPLET code=ArtistscopeViewer.class width=100 height=50 name=Artistscope000 id=Artistscope>  
<param name="style" value="ImageLink">  
<param name="textColour" value="ffffff">  
<param name="borderColour" value="6699ff">  
<param name="border" value="0">  
<param name="loading" value="Image loading">  
<param name="label" value="Encrypted Animated GIF">  
<param name="link" value="/index.html">  
<param name="targetFrame" value="_blank">  
</APPLET>
```

Adding a link to the image applet

A hyperlink can be added to the image applet that will be activated on mouse click.

Removing the hyperlink

If a link is not required simply leave the field blank.

Targeted framesets

When an image hyperlink is used the frame that the next page is to open into can be targeted for control within framesets, to open into a specific frame or to open into a new browser window, etc.

Uploading

Files to Upload

All of the files found in the **project** folder (where you saved your new work) must be uploaded for the system to work. The files required for the [tutorial](#) test are as follows:

ArtistscopePro.class - Pro Java class file.

ArtistscopeViewer.class - Pro Java class file.

ImgLoader.class - Pro Java class file.

test.class - encrypted image

test2.class - 2nd encrypted image (with swap image)

test.html - web page with the ArtistScope applet

Uploading by FTP

Never upload images or class files as ASCII. They must always be uploaded as Binary or they will be corrupted.

Uploading with FrontPage

Simply copy your files from your local directory and paste them to the destination folder on your site. Or you can use the "Publish Web" option.

Original Images

Any original images that have been encrypted can be removed from the server as they are no longer needed. The new image.class file will be used in the security applet.

Security

Some servers, when a call is made and the main index page is absent, will give the visitor a directory of all files within that folder. A precaution is having a generic filename your web server considers to be the default file. If your ISP requests that your home page be named index.html, index.htm, or default.htm -- then that's the filename being used. You should always have a default file in the project folder. This way, users who simply type in the name of the folder will be automatically directed to the default page, preventing them from seeing your file directory and thus exposing your secret folder.